



STUDYING MEDICINE AS A GRADUATE

Dr Veronica McKay
Director of Admissions



DISCLAIMERS

- Information is current
- Refer to selection policy of the medicine programme in each application cycle
- Update from official sources
- Information is subject to change

March 2026

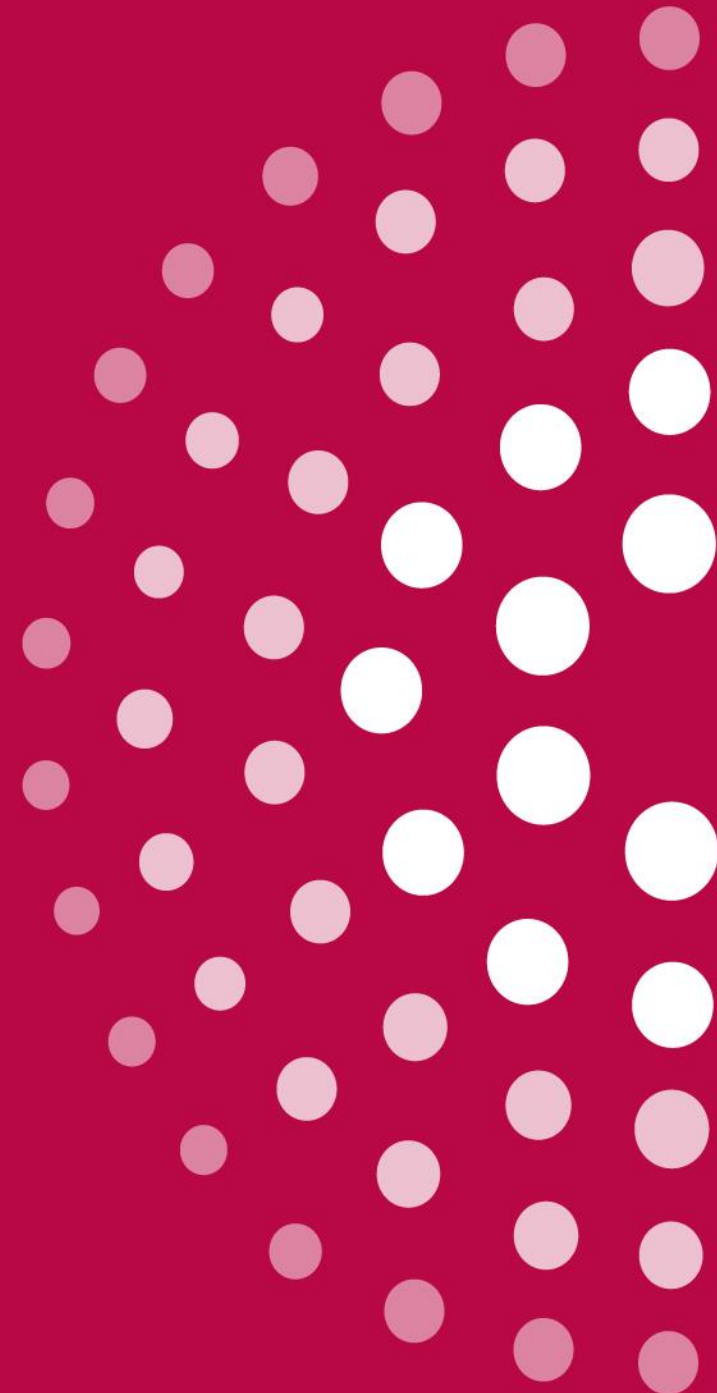


AIMS OF SESSION

- Medicine as a career
- Types of UK Medical Programmes
- Applying to a UK Medical School
- Medicine selection process
- Finance
- Top Tips
- HYMS MB BS



MEDICINE AS A CAREER



A CAREER IN MEDICINE

- Stimulating, rewarding, varied, lifelong learning
- Public trust and confidence, GMC regulation
- NHS employment- speciality training, flexible working, national tiered income with pension
- Academia, industry, media, medico-political
- Global opportunities



NHS POSTGRADUATE TRAINING

UK Foundation Programme

- FY1 (GMC Full Licence to Practice) + FY2



- GP Training

(FY3)

Specialty training



GP CCT

(61 CCT, 40 subspecialties)



- GP

Portfolio

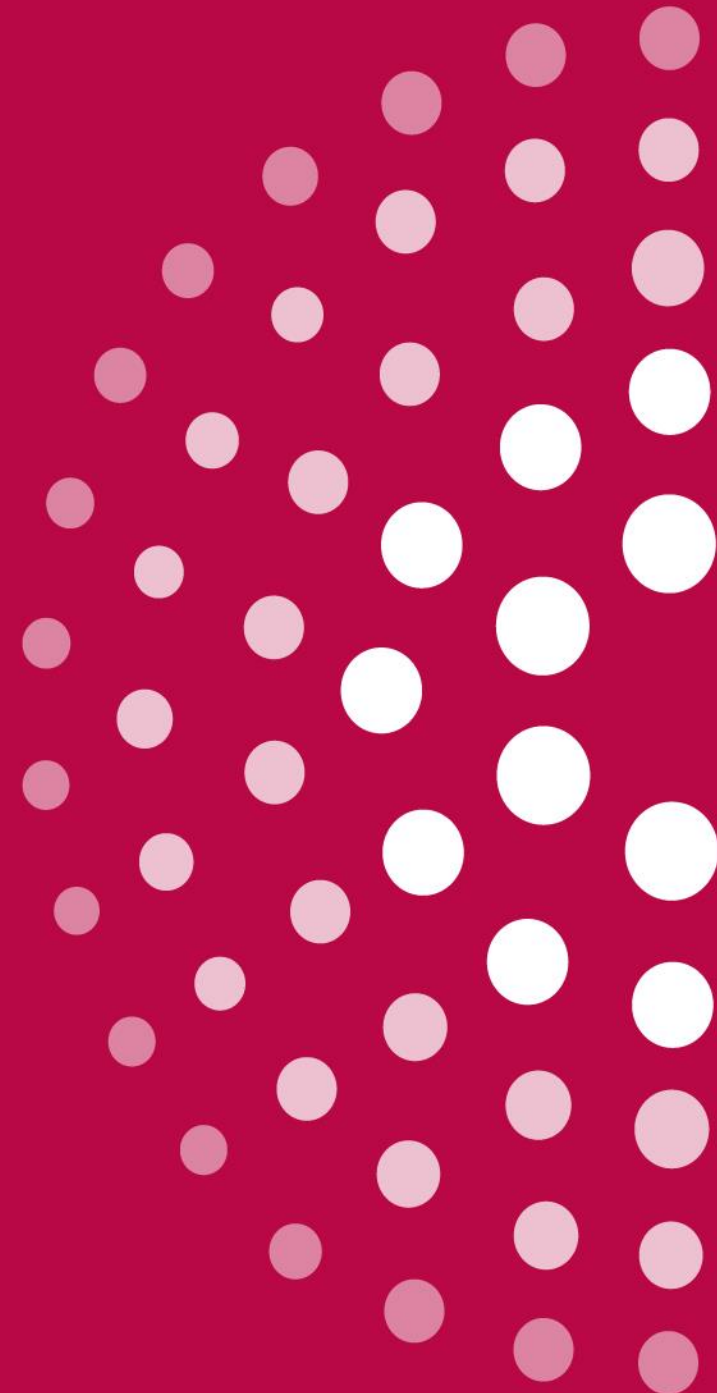
Consultant Specialist,



BUT.....

- Not 9am -5pm
- Prolonged training plus PG exams
- Challenges of work- life balance and wellbeing
- NHS under stress
- Demanding- work P/T, work overseas, leave or retire earlier from the medical profession

TYPES OF UK MEDICAL PROGRAMMES



TYPES OF MEDICAL COURSES

- 6Y-Medicine with Foundation/Gateway/Preliminary Year
- 6Y-Medicine with an Intercalation Year
- **5Y-Standard Course (e.g.MB BS Hull York Medicine School)**
- **4Y-Graduate Entry Medicine**
- General Medical Council regulates all 46 UK medical schools and their courses
- From 2025 MLA to provisionally join the GMC Medical Register



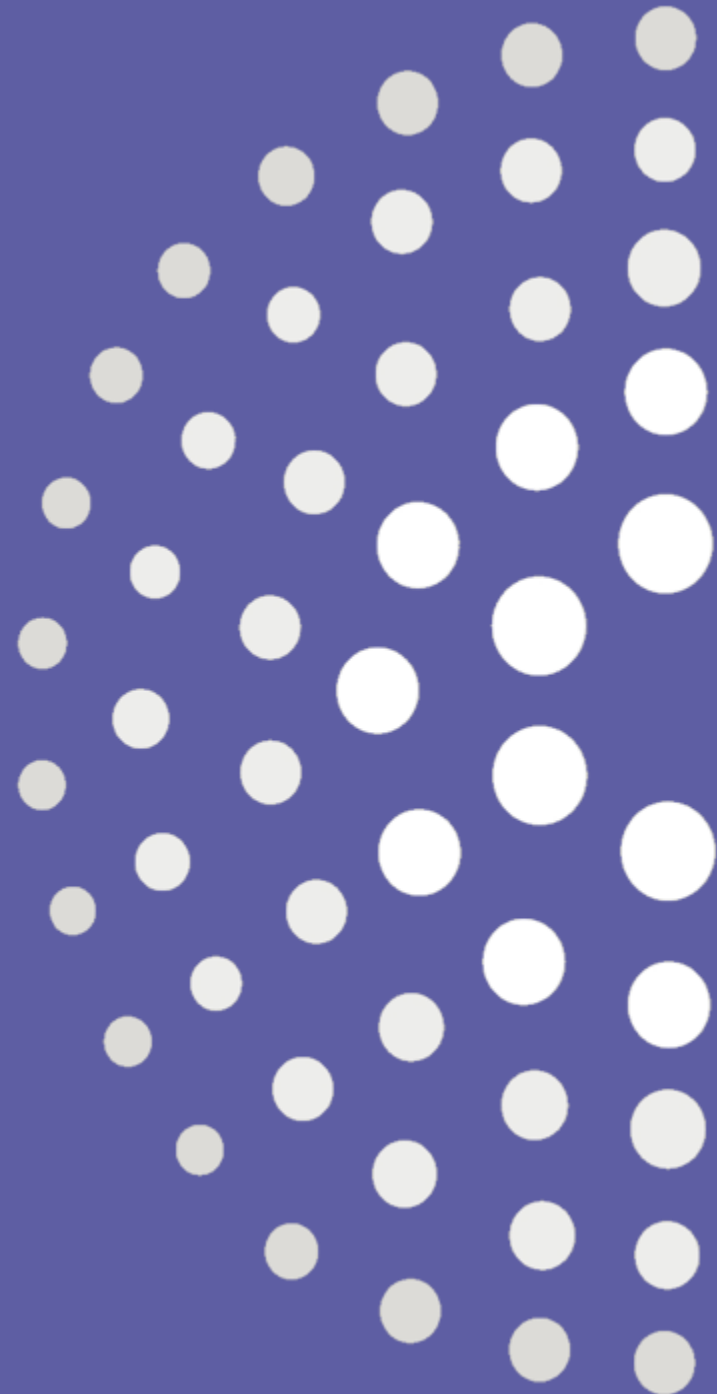
STANDARD

- Longer 5Y
- *Funding is very limited
- Competitive
- Larger cohort intake
- 44 programmes

GRADUATE (GEM)

- Shorter 4Y
- *Some funding available
- Highly competitive
- Smaller cohort intake
- 23 programmes

APPLYING TO A UK MEDICAL SCHOOL PROGRAMME





Career
Options



Work
Experience

UCAS

UCAS
Application



Research



Admission
Test



Interview



RESEARCH - 46 OPTIONS

- Size
- Course structure (Traditional/Integrated)
- Curriculum
- Teaching Style (Traditional/Integrated/PBL)
- Older v New
- Geographical region
- Strategy



ENTRY REQUIREMENTS

- Vary-subject, grade, qualification
- GCSEs, A Levels or equivalents (specific subjects), Graduates-2:1 (specific degrees) or Master degree
- Admissions tests-UCAT, GAMSAT
- Work-related experience
- UCAS deadline 16th October



WORK EXPERIENCE

- Realistic understanding
- People facing
- Shadowing - community, primary or secondary
- Online clinical –Medical School Council resources
- Reflection -core values, skills and attributes needed to study medicine / be a doctor



KEY ATTRIBUTES OF MEDICAL STUDENTS

Honesty and
integrity

Communication

Empathy

Personal
Reflection

Time management

Responsibility

Critical thinking

Team working

Understanding

Problem solving

Leadership

Professionalism

Resilience

Conscientiousness

Decision making

REFLECTION

- ***"At its core, reflection is thinking about what you've done, what you did well and what you could do better next time."*** GMC: The reflective practitioner: guidance for doctors and medical students
- Personal statement and interview
- RCGP/MSCSA: Inspiring and Preparing Tomorrow's Doctors Reflective Diary
- Reflective Models- ***" what, so what, now what"***



ADMISSIONS TESTS

- UCAT (> 45 medical schools, x1/cycle)
- BMAT discontinued from 2025-entry
- GAMSAT (12 medical schools, >1/cycle March Sept)
- Check valid for year of application
- Check official sources



UCAS APPLICATION

- Choice of 4 Medicine programmes
- Early UCAS application deadline 16th October
- No late amendments accepted

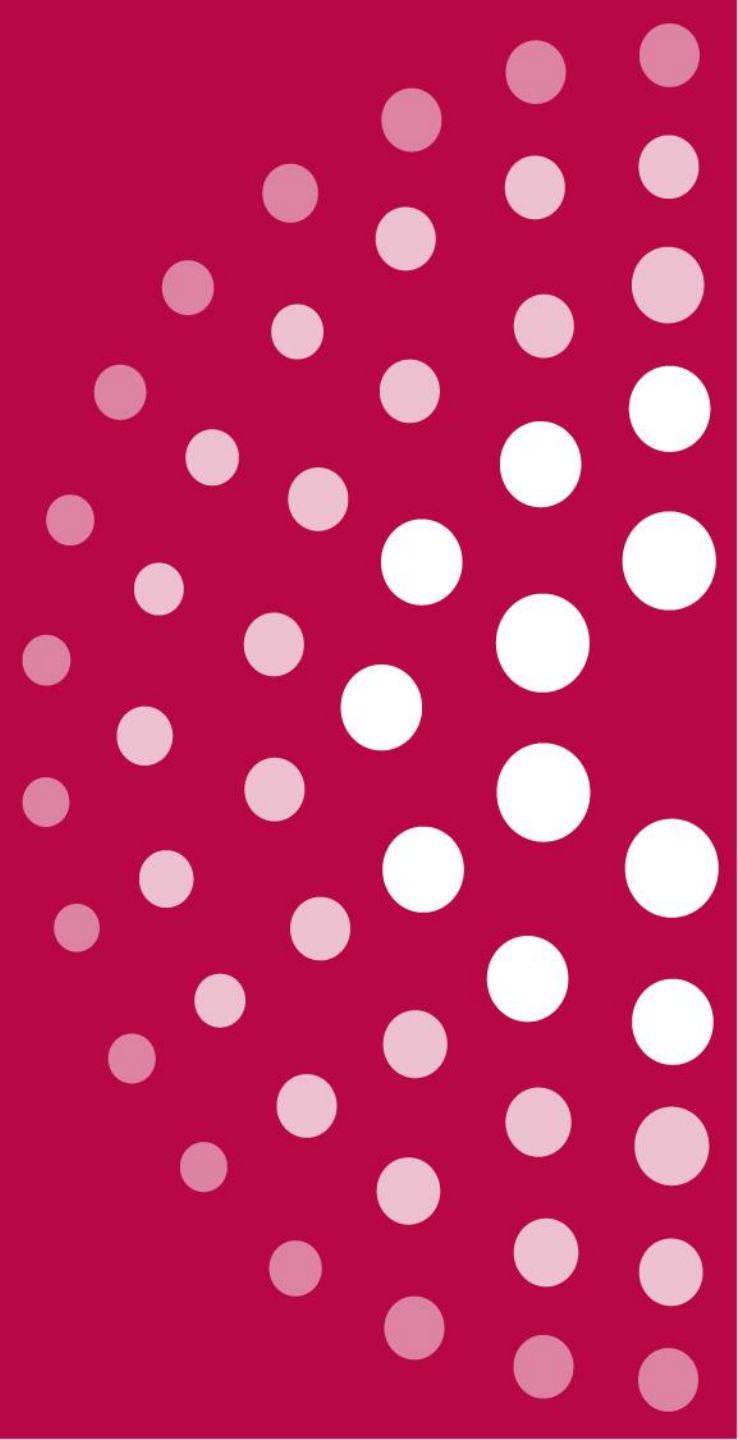


PREPARATION FOR INTERVIEW NON-ACADEMIC REQUIREMENTS

- Attitude and suitability including [NHS core values](#)
- Interpersonal skills
- Knowledge of what is happening within medicine and the NHS
- Motivation to become a doctor
- Why did you choose this medical school-will you be a good fit?



MEDICINE SELECTION



MEDICAL SELECTION PROCESS

- UCAS application academic screening
- Admissions test score (if UCAT + SJT)
- Pre-interview requirements
- Interviews-panel, multiple mini-interviews(MMIs), assessment centres
- In person or online format
 - Post offer visit experience
 - Applicant offer decision-one firm, one insurance

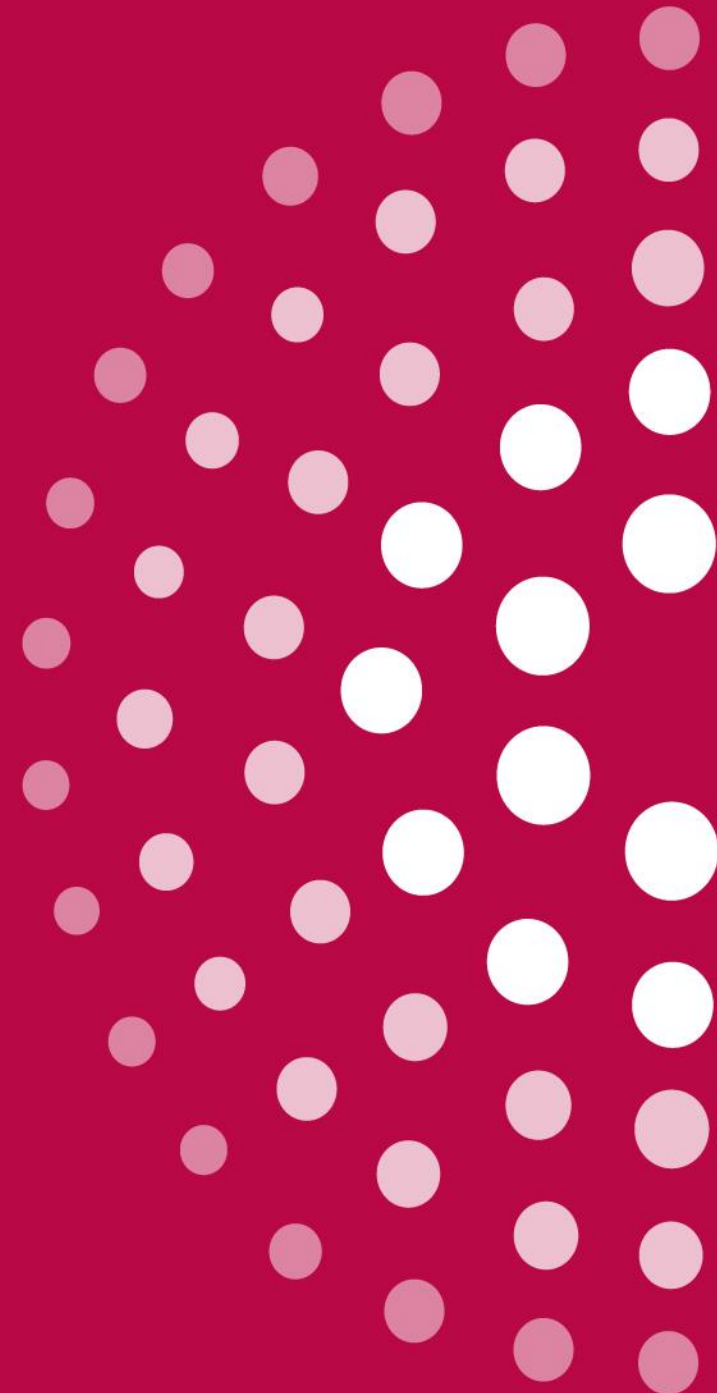


2026-ENTRY ADMISSIONS CYCLE

- 25,770 applications for 7100 H 500 OS
- Nationally + 10.4%% (-3.3 % in 2025)
- Virtual or in person interviews
- Highly competitive selection process



FINANCE



FUNDING – YEAR 1

Year 1	England Undergraduates Standard Course	England Graduates Standard Course	England Graduates 4-year GEM course
Tuition Fee	Fee loan: up to £9,535 From 2026 -£9,790	*No loan available	Self-fund first £3,465. Fee loan: up to £5,785 From 2025-£6070
Maintenance Loan	Up to £8,700	Up to £8,700	Up to £8,700
NHS Grant			
HYMS Bursary	£2400 (<35k RHI)/year of study	£2400 (<35k RHI)/year of study	



FUNDING – YEARS 2 TO 4

Year 2-4	England Undergraduates Standard Course 5-6 year	England Graduates Standard Course 5 year	England Graduates GEM course 4-year
Tuition Fee	Fee loan: up to £9,535 From 2026-£9,790	*No loan available	NHS pays first £3,715 Fee graduate loan: up to £5,535* From 2025 up to £6070
Maintenance Loan	Up to £10,544	Up to £8,700	Up to £2,324 (up to £1,811 final year)
NHS Maintenance Bursary			Up to £4,491*
NHS Grant			£1000
HYMS Bursary	£2400 (<35k RHI)	£2400 (<35k RHI)	

FUNDING – YEAR 5

Year 5	England Undergraduates Standard 5-6 year	England Graduates Standard Course 5 -year	England Graduates GEM course 4 -year
Tuition Fee	NHS pays full fee*	NHS pays full fee	
Maintenance Loan	up to £2324 final year	up to £2324 final year	
NHS Maintenance Bursary	Up to £4,491*	Up to £4,491*	
NHS Grant	£1000	£1000	
HYMS Bursary	£2400 (<35k RHI)	£2400 (<35k RHI)	



*LIFETIME LEARNING ENTITLEMENT (LLE)

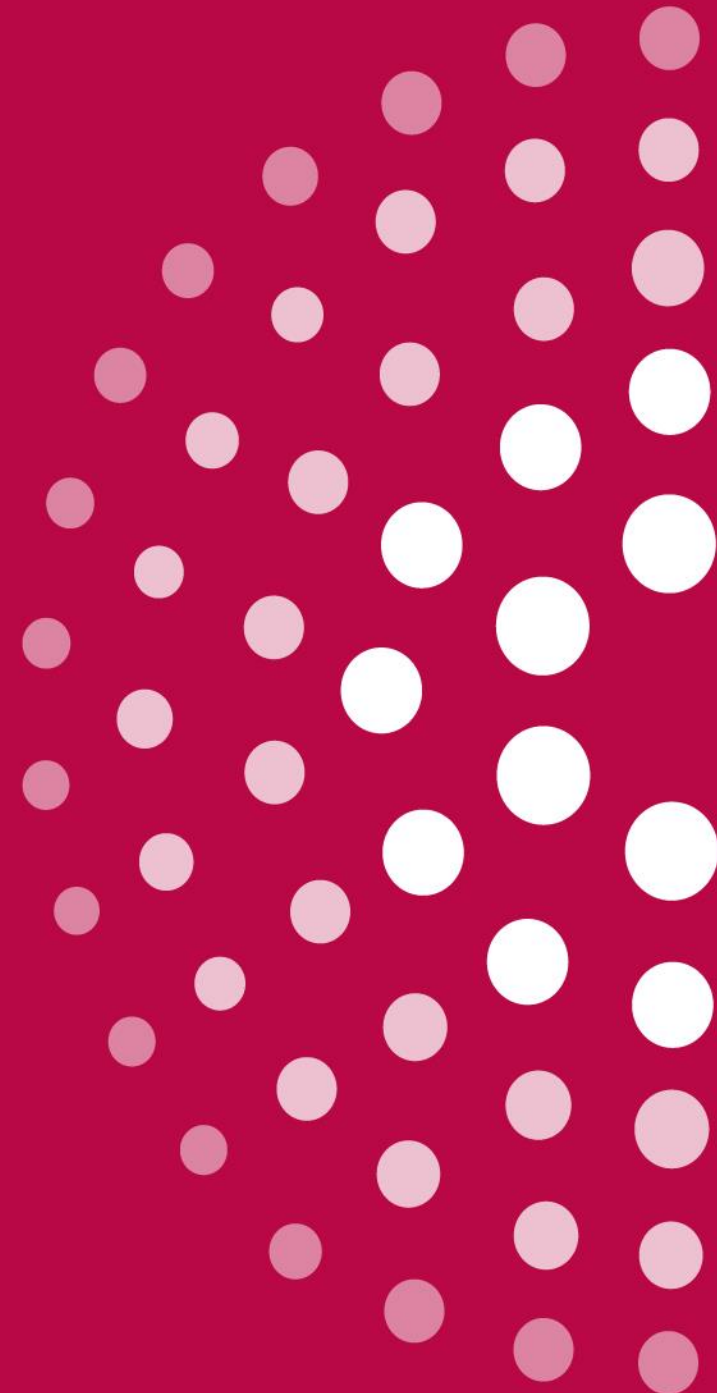
- Tuition funding for courses from Jan 2027 in England
- Graduates can access priority additional entitlement to retrain in medicine- full courses

<https://www.gov.uk/government/publications/lifelong-learning-entitlement-lle-overview/lifelong-learning-entitlement-overview>

- <https://www.heinfo.sl.c.co.uk/lle/lle-faq/lifelong-learning-entitlement-faq/lle-faq/how-funding-will-work/>



TOP TIPS



TOP TIPS

- Research and strategy
- Clinical work experience: GP, York Hospital Schools and Work Experience Team (ellie.dove@nhs.net), SNAPPY <https://www.thesnappytrust.org/>
- Reflective diary and link the "now what" into your personal statement and for interview prep
- Update key medical topics/ developments across different information sources
- Practice structured answers on a range of key topics offering different perspectives including personal, consider STARR approach
- Be flexible, be in the moment and "authentic" in your answers
- Do not use AI during an online interview or for your PS

RESOURCES

- **Medical School Council**

<https://www.medschools.ac.uk>

- **RCGP/MSCSA: Inspiring and Preparing Tomorrow's Doctors Reflective Diary**

<https://www.rcgp.org.uk/getmedia/02dcaf12-9cf9-4494-86db-745d422d76e8/RCGP-reflective-diary-June-2019.pdf>

- **General Medical Council**

<https://www.gmc-uk.org/ethical-guidance/ethical-guidance-for-doctors/good-medical-practice>

- **Finance**

<https://rmbf.org/get-help/help-for-medical-students/medical-student-advice-hub/medicine-as-a-second-degree/>

<https://studentfinance.campaign.gov.uk/lifelong-learning-entitlement/>



MB BS

- standard 5-year programme
- Uni of York alumni have campus choice
- Uni of York BSc Biomedical Sciences - fast track interview if minimum UCAT decile 5 and SJT Band1-3
- UoY [Open Days](#) June 2026, mid-September 2026-check UoY website
- <https://www.hyms.ac.uk/medicine>



ANY QUESTIONS ?

www.hyms.ac.uk

Email furtherenquiries@hyms.ac.uk





WE ARE A
DIFFERENT
KIND OF MEDICAL SCHOOL
GET IN TOUCH

further.enquiries@hyms.ac.uk



HULL YORK MEDICAL SCHOOL GAVE ME THE OPPORTUNITY TO

FLOURISH

Dr Danni Adeleye, Class of 2018

